

00000001

1

00000010

2

00000100

4

00001000

8

00010000

16

00100000

32

01000000

64

10000000

128

11000000

192

11100000

224

11110000

240

11111000

248

11111100

252

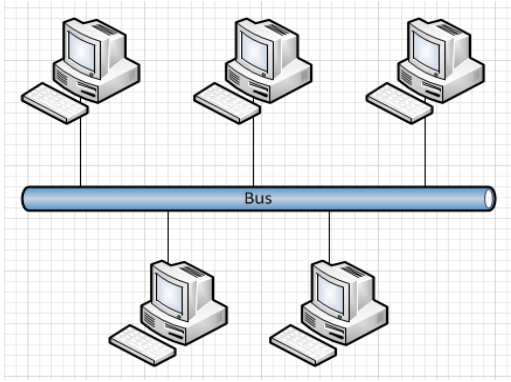
11111110

254

11111111

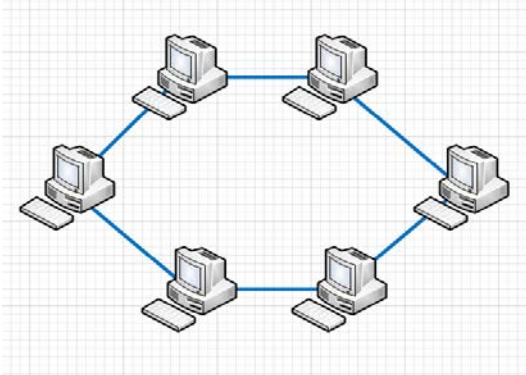
255

What Type of network is this?



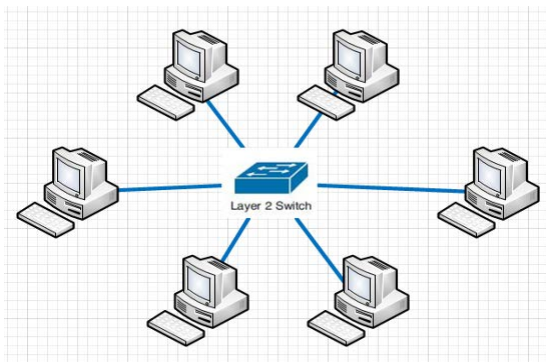
BUS Network

What Type of network is this?



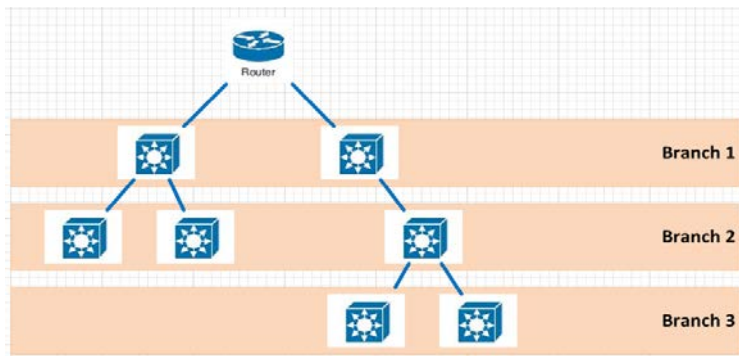
Ring Network

What Type of network is this?



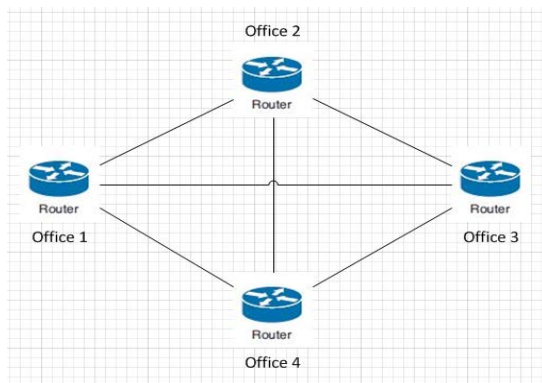
Star Network

What Type of network is this?



Tree Topology

What Type of network is this?



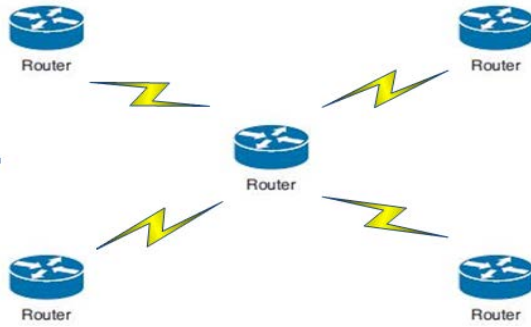
Mesh Network

What Type of network is this?



Point To Point

What Type of network is this?

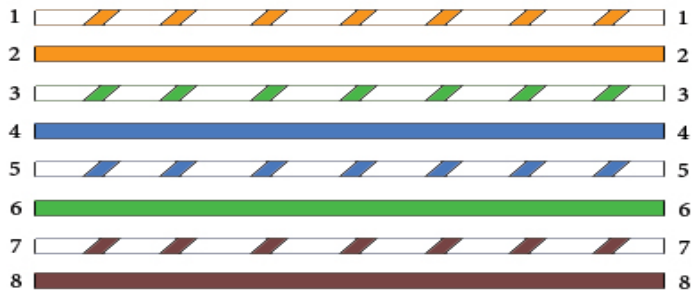


Point to Multipoint

What are the 4 main types of Network Topologies?

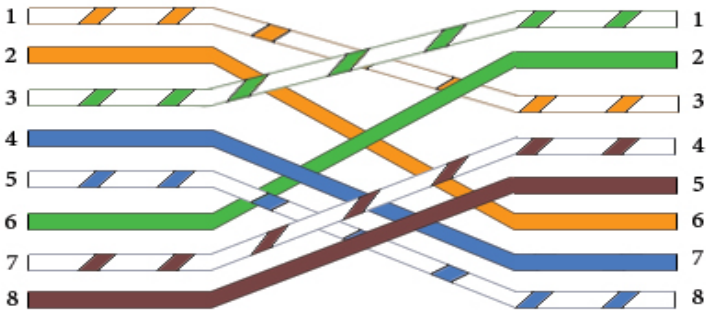
Bus Network, Ring Network, Star Network, Tree Network

What kind of Ethernet Cable is this?



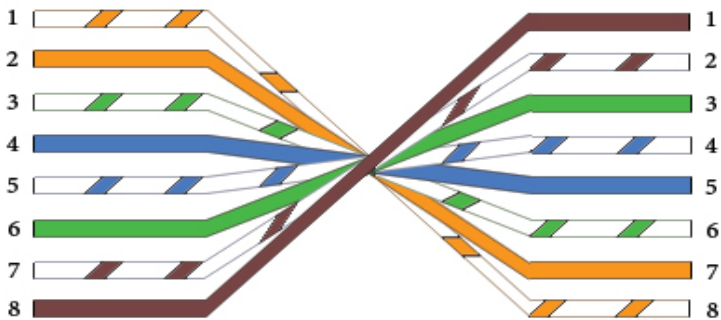
Straight Through Cable

What kind of Ethernet Cable is this?



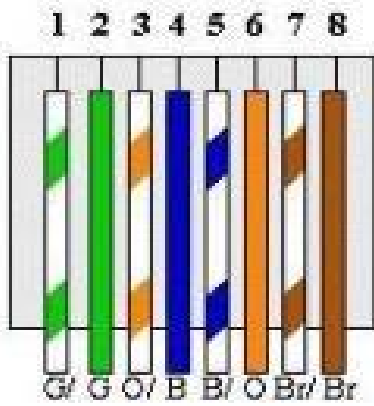
Crossover Cable

What kind of Ethernet Cable is this?



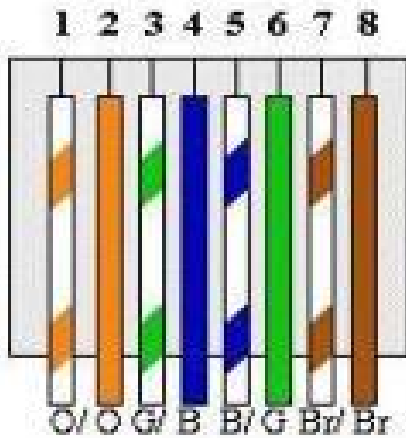
Roll Over Cable

What kind of Ethernet Cable is this?



T568A

What kind of Ethernet Cable is this?



T568B

What cable would you use to connect a Hub to a Hub?

Crossover Cable

**What cable would you use to connect
a Hub to a Switch?**

Crossover Cable

**What cable would you use to connect
a Hub to a Router?**

Straight Though Cable

**What cable would you use to connect
a Hub to a Workstation?**

Straight Though Cable

**What cable would you use to connect
a Switch to a Switch?**

Crossover Cable

**What cable would you use to connect
a Switch to a Router?**

Straight Though Cable

**What cable would you use to connect
a Switch to a Workstation?**

Straight Though Cable

**What cable would you use to connect
a Router to a Router?**

Crossover Cable

**What cable would you use to connect
a Router to a Workstation?**

Crossover Cable

**What cable would you use to connect
a Workstation to a Workstation?**

Crossover Cable

What is the cable type and max length of 10Base-T?

Copper and 100m

What is the cable type and max length of 100Base-T?

Copper and 100m

What is the cable type and max length of 1000Base-LX?

Fiber 500m

What is the cable type and max length of 1000Base-T?

Copper and 100m

What is the cable type and max length of 10GBase-T?

Copper and 100m

What Speed is 10Base-T

10 Mbps

What Speed is 100Base-T

10 Mbps

What Speed is 1000Base-LX

1000 Mbps

What Speed is 1000Base-T

1000 Mbps

What Speed is 10GBase-T

10 Gbps

**What is the IEEE standard name for
10BASE-T**

802.3

**What is the IEEE standard name for
100BASE-T**

802.3u

**What is the IEEE standard name for
1000BASE-LX**

802.3z

**What is the IEEE standard name for
1000BASE-T**

802.3ab

**What is the IEEE standard name for
10GBASE-T**

802.3an

**What three devices transmits on Pins
1, 2**

PC's, Routers, Wireless AP

**What two devices transmits on Pins
3, 6**

Hubs and Switches

What is the nick name of 10Base-5

Thicknet

What is the nick name of 10Base-2

Thinnet

What is the Max Distance of 10Base-5

500 m

What is the Max Distance of 10base-2

185 m

**Common connectors for 10BASE-T,
100BASE-T, 1000BASE-T**

RJ11, RJ12, RJ45

**Common connectors for 1000BASE-LX
or SX**

ST, SC, LC

Common connectors for 10GBASE-T

RJ45

**Common connectors for Thinnet
10BASE-5 and Thinnet 10BASE-2**

BNC, N, TNC, UHF

What Layer of the OSI model is the "Application Layer"

Layer 7

What Layer of the OSI model is the "Presentation Layer"

Layer 6

What Layer of the OSI model is the "Session Layer"

Layer 5

**What Layer of the OSI model is the
"Transport Layer"**

Layer 4

**What Layer of the OSI model is the
"Network Layer"**

Layer 3

**What Layer of the OSI model is the
"Data Link Layer"**

Layer 2

**What Layer of the OSI model is the
"Physical Layer"**

Layer 1

**What is the layer name for the OSI
Layer 7?**

Application Layer

**What is the layer name for the OSI
Layer 6?**

Presentation Layer

**What is the layer name for the OSI
Layer 5?**

Session Layer

**What is the layer name for the OSI
Layer 4?**

Transport Layer

**What is the layer name for the OSI
Layer 3?**

Network Layer

**What is the layer name for the OSI
Layer 2?**

Data Link Layer

**What is the layer name for the OSI
Layer 1?**

Physical Network

**What Layer of the TCP/IP "Updated"
model is the "Application Layer"**

Layer 5

What Layer of the TCP/IP "Updated" model is the "Transport Layer"

Layer 4

What Layer of the TCP/IP "Updated" model is the "Network Layer"

Layer 3

What Layer of the TCP/IP "Updated" model is the "Data Link Layer"

Layer 2

What Layer of the TCP/IP "Updated" model is the "Physical Layer"

Layer 1

What is the TCP/IP Layer name of Layer 5?

Application Layer

What is the TCP/IP Layer name of Layer 4?

Transport Layer

What is the TCP/IP Layer name of Layer 3?

Network Layer

What is the TCP/IP Layer name of Layer 2?

Data Link Layer

What is the TCP/IP Layer name of Layer 1?

Physical Layer

What is the Data Unit at Application Layer?

Data

What is the Data Unit at the Presentation Layer?

Data

What is the Data Unit at the Session Layer?

Data

What is the Data Unit at the Transport Layer?

Segment

What is the Data Unit at the Network Layer?

Packet

What is the Data Unit at the Data Link Layer?

Frame

What is the Data Unit at the Physical Layer?	Bits
What port and does it use TCP or UDP: FTP	20 and 21 TCP
What port and does it use TCP or UDP: SSH	22, TCP

**What port and does it use TCP or
UDP: Telnet**

23, TCP

**What port and does it use TCP or
UDP: SMTP**

25, TCP

**What port and does it use TCP or
UDP: DNS**

53, TCP & UDP

**What port and does it use TCP or
UDP: DHCP**

67 & 68, UDP

**What port and does it use TCP or
UDP: TFTP**

69, UDP

**What port and does it use TCP or
UDP: HTTP**

80, TCP

**What port and does it use TCP or
UDP: POP3**

110, TCP

**What port and does it use TCP or
UDP: SNMP**

161, UDP

**What port and does it use TCP or
UDP: HTTPs**

443, TCP

**What is the HDLC Header Equivalent
for: Preamble**

FLAG

**What is the HDLC Header Equivalent
for: Destination Address**

Address

**What is the HDLC Header Equivalent
for: Type**

Type

What is the HDLC Header Equivalent for: FCS

FCS

What is the "Application Layer" responsible for?

Provides an Interface between the Network and Software Applications for Interpreting requests and requirements.

What is the "Presentation Layer" responsible for?

Allows hosts and applications to use common communication. It also preforms data Encryption, Compression and Formatting.

What is the "Session Layer" responsible for?

Manages connections (Establish, Maintains, and Terminates)

What is the "Transport Layer" responsible for?

Provides End to End communication service for applications. Provides services as Connection-Oriented data stream support, Reliability, Flow Control, and Multiplexing

What is the "Network Layer" responsible for?

Creates network connections, translates Network addresses to MAC addresses and sets routing

<p>What is the "Data Link Layer" responsible for?</p>	<p>Packages data into frames set by the network</p>
<p>What is the "Physical Layer" responsible for?</p>	<p>Physical signal connection between devices, responsible for signaling.</p>
<p>Common Protocols and Standards for "Application Layer"?</p>	<p>BOOTP, DHCP, DNS, FTP, HTTP, HTTPS, IMAP4, PING, POP3, NSLOOPUP, NTP, SFTP, SMTP, SNMP, Telnet, TFTP</p>

**Common Protocols and Standards for
"Presentation Layer"?**

MIME, SSL, TLS

**Common Protocols and Standards for
"Session Layer"?**

RTP and SIP

**Common Protocols and Standards for
"Transport Layer"?**

TCP, UDP

**Common Protocols and Standards for
"Network Layer"?**

ARP, ICMP, IGMP, IP, IPSec, RARP

**Common Protocols and Standards for
"Data Link Layer"?**

L2TP, PPP, PPTP, SLIP

**Common Protocols and Standards for
"Physical Link Layer"?**

Ethernet, Token Ring, Wi-Fi

**What network class is this IPv4 IP
address and is it Public or Private?
2.5.12.55**

Class A Public

**What network class is this IPv4 IP
address and is it Public or Private?
10.23.140.55**

Class A Private

**What network class is this IPv4 IP
address and is it Public or Private?
126.93.26.112**

Class A Public

**What network class is this IPv4 IP address and is it Public or Private?
127.0.15.9**

Class A Reserved for Loopback

**What network class is this IPv4 IP address and is it Public or Private?
128.0.5.7**

Class B Public

**What network class is this IPv4 IP address and is it Public or Private?
191.250.168.15**

Class B Public

**What network class is this IPv4 IP
address and is it Public or Private?
172.15.68.222**

Class B Public

**What network class is this IPv4 IP
address and is it Public or Private?
172.19.57.35**

Class B Private

**What network class is this IPv4 IP
address and is it Public or Private?
172.32.183.241**

Class B Public

**What network class is this IPv4 IP
address and is it Public or Private?
192.15.39.97**

Class C Public

**What network class is this IPv4 IP
address and is it Public or Private?
192.168.7.41**

Class C Private

**What network class is this IPv4 IP
address and is it Public or Private?
192.172.0.68**

Class C Public

**What network class is this IPv4 IP address and is it Public or Private?
223.64.134.64**

Class C Public

**What network class is this IPv4 IP address and is it Public or Private?
225.64.68.139**

Class D Multicast (Trick Question)

What Class network has a default Subnet of: 255.0.0.0?

Class A

**What Class network has a default
Subnet of: 255.255.0.0?**

Class B

**What Class network has a default
Subnet of: 255.255.255.0?**

Class C

**What is the CIDR notation of:
255.255.255.0**

/24

**What is the CIDR notation of:
255.255.0.0**

/16

**What is the CIDR notation of:
255.0.0.0**

/8

**What is the CIDR notation of:
128.0.0.0**

/1

**What is the CIDR notation of:
240.0.0.0**

/4

**What is the CIDR notation of:
255.224.0.0**

/11

**What is the CIDR notation of:
255.254.0.0**

/15

**What is the CIDR notation of:
255.255.192.0**

/18

**What is the CIDR notation of:
255.255.248.0**

/21

**What is the CIDR notation of:
255.255.255.128**

/25

**What is the CIDR notation of:
255.255.255.248**

/29

**What is the valid network range of a
Class A network**

1.0.0.0 - 126.0.0.0

**What is the valid network range of a
Class B network**

128.0.0.0 - 191.255.0.0

**What is the valid network range of a
Class B network**

192.0.0.0 - 223.255.255.255

How many bits does an IPv4 address have?

32

About how many how many IPv4 address are there?

About 4 Billion

How many bits does an IPv6 address have?

128 Bits

About how many how many IPv6 address are there?

Over 340 Undecillion

What IPv? Has IPsec built in?

IPv6

What IP version has fragmentation done by the sender and the forwarding routers?

IPv4

What IP version has no checksum in the header?

IPv6

What IP version has option fields in the header

IPv4

What IP version uses ARP?

IPv4

What IP version uses NDP?

IPv6

What IP version uses IGMP?

IPv4

What IP version uses MLD?

IPv6

What IP version uses A records?

IPv4

What IP version uses AAAA records?

IPv6

What IP version uses NAT?

IPv4

<p>What IP version has uses the following method for asigning addresses DHCP? "Dynamic Allocation"</p>	<p>IPv4</p>
<p>What IP version has uses the following method for asigning addresses DHCP? "Automatic Allocation"</p>	<p>IPv4</p>
<p>What IP version has uses the following method for asigning addresses DHCP? "Static Allocation"</p>	<p>IPv4</p>

<p>What IP version has uses the following method for asigning addresses DHCP? "Static Configuration"</p>	<p>IPv6</p>
<p>What IP version has uses the following method for asigning addresses DHCP? "SLAAC or Stateless Auto Address Configuration"</p>	<p>IPv6</p>
<p>What IP version has uses the following method for asigning addresses? "Statefull DHCP"</p>	<p>IPv6</p>

What IP version has uses the following method for asigning addresses DHCP? "Stateless DHCP"

IPv6

What level route is: Default Route?

Level 1

What level route is: Supernet Route?

Level 1

What level route is: Network Route

Level 1

What level route is: Ultimate Route?

Level 1

What level route is: Parent Route?

Level 1

What level route is: Child Route?

Level 2

What are the 3 ways to access a Cisco network device?

Console, Telnet, SSH

Where is the BootStrap stored?

EEPROM

Where is the IOS Stored?

Flash

Where is the IOS ran from?

RAM

Where is the Configuration Stored?

NVRAM

**Where is the configuration used
from?**

RAM

What protocol is a Distance Vector routing protocol?

RIP

What advanced protocol is a Distance Vector routing protocol?

EGIRP

What protocol is a Link State routing protocol?

OSPF

A bridge operates at Half or Full Duplex?

Half Duplex

A switch operates at what layer of the OSI model?

Layer 2

How many colision domains does a Hub have?

One

How many colision domains does a Switch have?

Many (As many ports as it has)

What layer of the OSI model dose a Router exist?

Layer 3

What does this below represent in a network diagram?



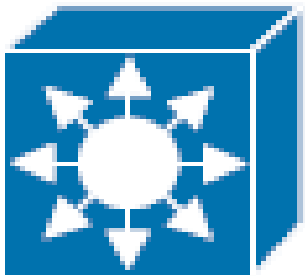
Bridge

What does this below represent in a network diagram?



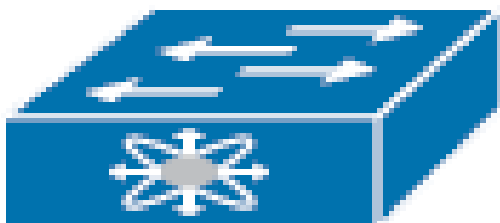
Switch (Layer 2)

What does this below represent in a network diagram?



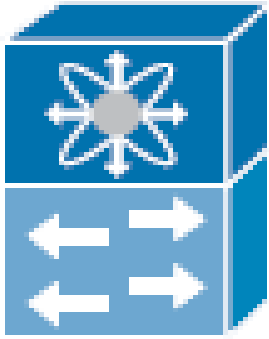
Switch (Layer 3)

What does this below represent in a network diagram?



Nexus Switch

What does this below represent in a network diagram?



Switch (Nexus 7000)

What does this below represent in a network diagram?



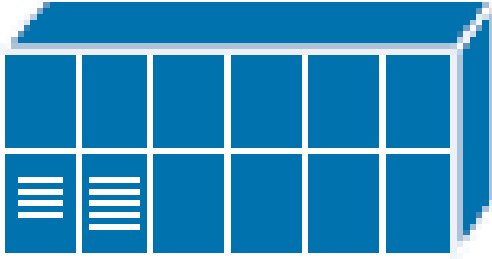
Router

What does this below represent in a network diagram?



Printer

What does this below represent in a network diagram?



WAN Switch

What does this below represent in a network diagram?



Frame Relay Switch

What does this below represent in a network diagram?



Cable Modem

What does this below represent in a network diagram?



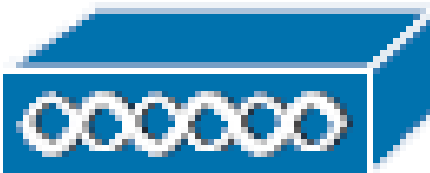
DSLAM

What does this below represent in a network diagram?



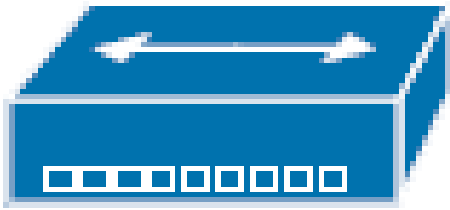
CSU/DSU

What does this below represent in a network diagram?



Access Point

What does this below represent in a network diagram?



Hub

What does this below represent in a network diagram?



PIX Firewall

What does this below represent in a network diagram?



Firewall (ASA)

What does this below represent in a network diagram?



Firewall

What does this below represent in a network diagram?



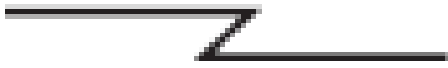
Network Cloud

What does this below represent in a network diagram?



Network Connection

What does this below represent in a network diagram?



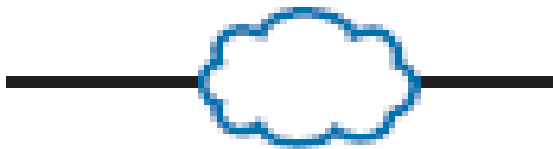
Serial Line

What does this below represent in a network diagram?



Virtual Circuit

What does this below represent in a network diagram?



Ethernet WAN

What does this below represent in a network diagram?



Wireless

Can a VTP client be used to configure a VLAN?

No

VTP Server supports how many VLAN ID's?

1-1005

<p>VTP <u>Client</u> supports how many VLAN ID's?</p>	<p>1-1005</p>
<p>How many VLAN ID's dose a <u>Transparent</u> Mode support?</p>	<p>1-4094</p>
<p>Default Port Cost according to IEEE for: 10 Mbps</p>	<p>100</p>

**Default Port Cost according to IEEE
for: 100 Mbps**

19

**Default Port Cost according to IEEE
for: 1 Gbps**

4

**Default Port Cost according to IEEE
for: 10 Gbps**

2

**What is the STP default timer value
for: Hello**

2 Seconds

**What is the STP default timer value
for: Max Age**

10 times the Hello timer

**What is the STP default timer value
for: Forward Delay**

15 seconds

What is the ALL-Nodes Multicast address for IPv6?

FF02::1

What is the All-Routers Multicast address for IPv6?

FF02::2

What is the RIPng routers Multicast address for IPv6?

FF02::9

What is the ALL-OSPF Multicast address for IPv6?

FF02::5

What is the ALL-OSPF-DR Multicast address for IPv6?

FF02::6

What is the EIGRPv6 routers Multicast address for IPv6?

FF02::A